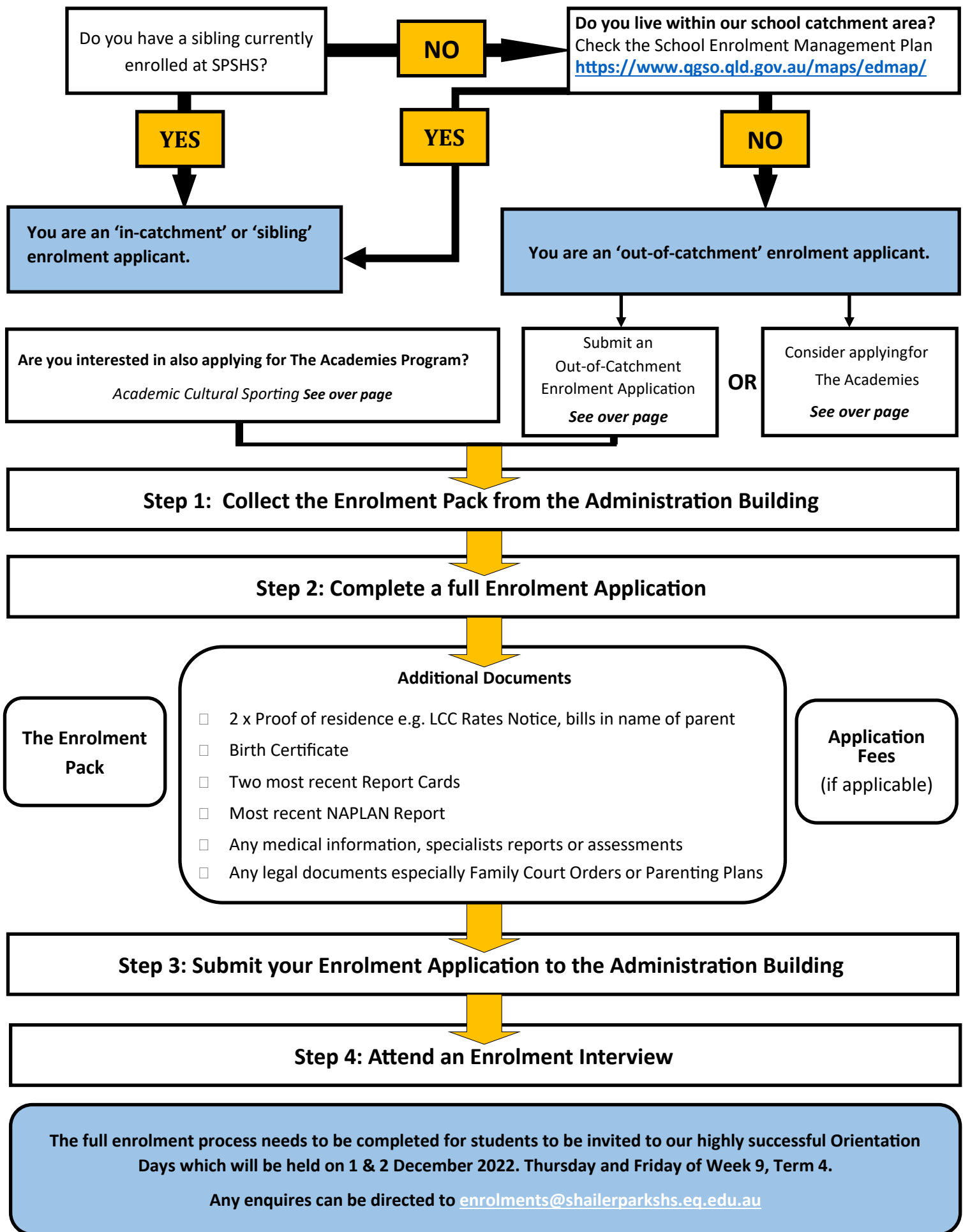




The Enrolment Process



SCHOOL ENROLMENT MANAGEMENT PLAN

All enrolments at our school are considered under a School Enrolment Management Plan (EMP). Under the EMP, our responsibility is to provide access to students whose principal place of residence is within the school's catchment area.

What does this mean for your family?


You may have some questions about the EMP and its possible impact on your family. The following details might be helpful:

1. The EMP came into effect from 12 April 2019 and is applied to all enrolment applications from this date.
2. The school's catchment map can be viewed at <http://www.qgso.qld.gov.au/maps/edmap/> You will be able to follow the prompts to search for or select the school by name. From there, you can look at our catchment area and zoom in to find your street.
3. Parents / carers will need to demonstrate that the student's home is within the catchment area and will need to provide proof. If a student is living with a relative or another person within the catchment, a properly sworn Statutory Declaration by the enrolling parent / carers may also be required.
4. The following students are included as those entitled to enrol even though they live out-of-catchment:
 - a) Children and young people under child protection orders.
 - b) Siblings of current students.
 - c) Students of parents / carers employed at SPSHS or our local feeder primary schools.
 - d) Students with disabilities whose needs cannot be met by their closest school.
 - e) Students who have been excluded from another school, subject to conditions.
5. We are able to accept out of-catchment enrolments under certain provisions once future growth and current capacity has been considered.
6. The Principal is responsible for all decisions regarding enrolments. Families will receive written notification and can respond to a notice of an unsuccessful, out-of-catchment enrolment application.



The Academies Programs

Shailer Park State High School offers a range of academic, cultural and sporting programs (The Academies) that have been developed with strong industry and tertiary partnerships. **The Academies** inspire, challenge and extend students with exceptional abilities while strengthening their love of learning. Interested students need to complete an additional Academies Application Form, pay trial application fees \$30 in total via QKR app and participate in all aspects of the trial process. There are no restrictions on the number of programs that students may apply for. Important dates for the application process for **The Academies** are listed below.

 <p>Academic Excellence in STEM</p> <p>Attend Big Thinkers' Day Date: Tuesday 17 May 2022 Where: Shailer Park SHS Time: 9AM - 2.30PM</p> <p>Submit your ENROLMENT PACK IN FULL, The Academies Application Form and pay Trial Fee (\$30) via Qkr app.</p> <p>Attend Academic Trial Day When: Tuesday 31 May 2022 Where: Shailer Park SHS</p>	 <p>Academic Excellence in English and Humanities</p> <p>Attend Big Thinkers' Day Date: Tuesday 17 May 2022 Where: Shailer Park SHS Time: 9AM - 2.30PM</p> <p>Submit your ENROLMENT PACK IN FULL, The Academies Application Form and pay Trial Fee (\$30) via Qkr app.</p> <p>Attend Academic Trial Day When: Tuesday 31 May 2022 Where: Shailer Park SHS</p>	 <p>STING FUTSAL</p> <p>If applying for this program only, submit your ENROLMENT PACK IN FULL, The Academies Application Form and pay Trial Fee (\$30) via Qkr app by Friday 29 July 2022 (Week 3, Term 3)</p> <p>Attend Futsal Trial Dates to be advised. <i>Students need to bring sports clothing, appropriate shoes and a water bottle</i></p>	 <p>STING VOLLEYBALL</p> <p>If applying for this program only, submit your ENROLMENT PACK IN FULL, The Academies Application Form and pay Trial Fee (\$30) via Qkr app by Friday 29 July 2022 (Week 3, Term 3)</p> <p>Attend Volleyball Trial Dates to be advised <i>Students need to bring sports clothing, appropriate shoes and a water bottle</i></p>	 <p>IGNITE DANCE</p> <p>If applying for this program only, submit your ENROLMENT PACK IN FULL, The Academies Application Form and pay Trial Fee (\$30) via Qkr app by Friday 29 July 2022 (Week 3, Term 3)</p> <p>Attend Dance Audition Dates to be advised <i>Students need to have comfortable clothing for dancing, jazz shoes and a water bottle</i></p>
---	---	---	--	---